

Anna Laskowska-Wronarowicz¹, Katarzyna Olszewska-Turek^{1,2},
Agnieszka Micek³, Barbara Bętkowska-Korpała^{1,2}

Otrzymano: 08.04.2024
Zaakceptowano: 16.08.2024
Opublikowano: 27.09.2024

Depresja a wskaźniki stanu zapalnego u pacjentów hospitalizowanych z powodu COVID-19 – przegląd systematyczny i metaanaliza


Depression and inflammation in COVID-19 patients during and after hospitalisation – a systematic review and meta-analysis

¹ Zakład Psychologii Klinicznej, Szpital Uniwersytecki w Krakowie, Kraków, Polska

² Zakład Psychologii Lekarskiej, Uniwersytet Jagielloński, Kraków, Polska

³ Pracownia Statystyczna, Instytut Pielęgniarstwa i Położnictwa, Uniwersytet Jagielloński, Kraków, Polska

Adres do korespondencji: Anna Laskowska-Wronarowicz, Zakład Psychologii Klinicznej, Szpital Uniwersytecki w Krakowie, ul. Jakubowskiego 2, 30-688 Kraków, Polska, e-mail: alaskowska@su.krakow.pl

 <https://doi.org/10.15557/PIPK.2024.0018>

ORCID iDs

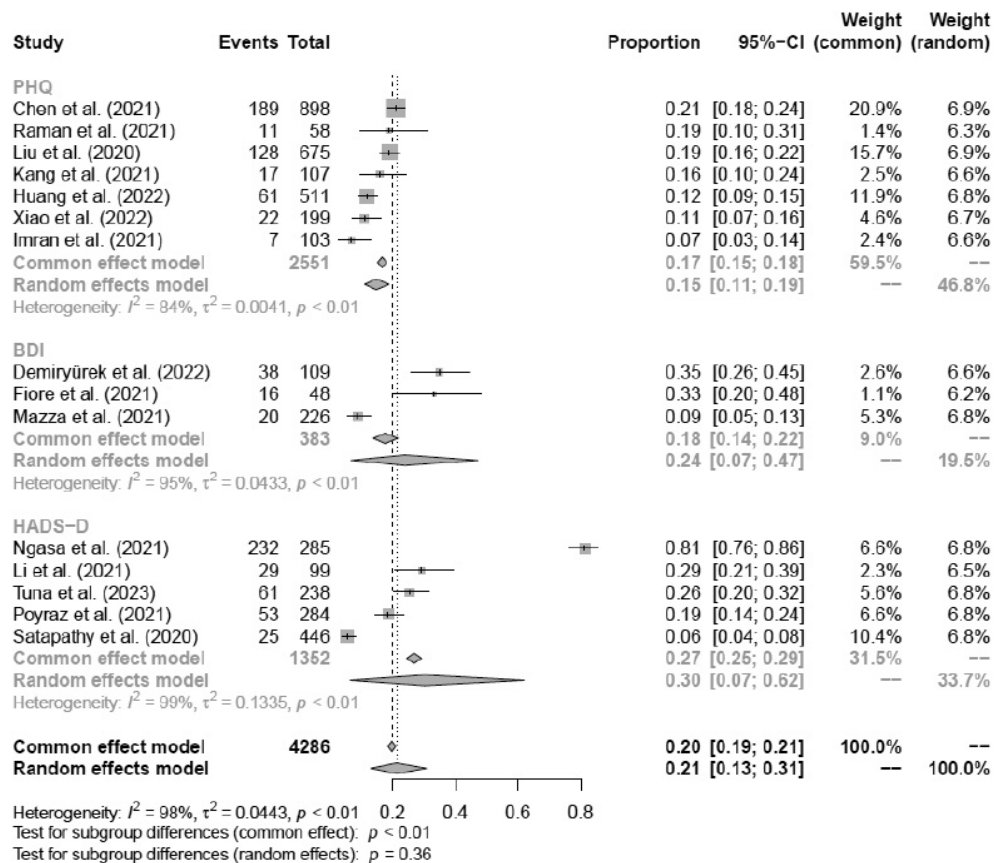
1. Anna Laskowska-Wronarowicz <https://orcid.org/0009-0002-7758-7017>

3. Agnieszka Micek <https://orcid.org/0000-0001-8557-1774>

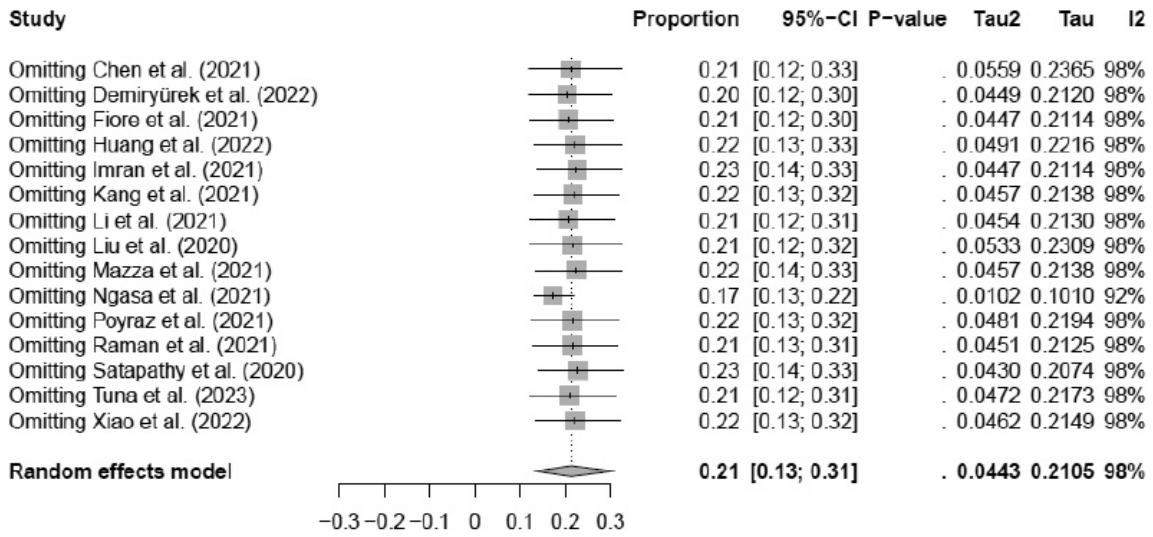
2. Katarzyna Olszewska-Turek <https://orcid.org/0000-0001-6348-2527>

4. Barbara Bętkowska-Korpała <https://orcid.org/0000-0001-7893-8726>

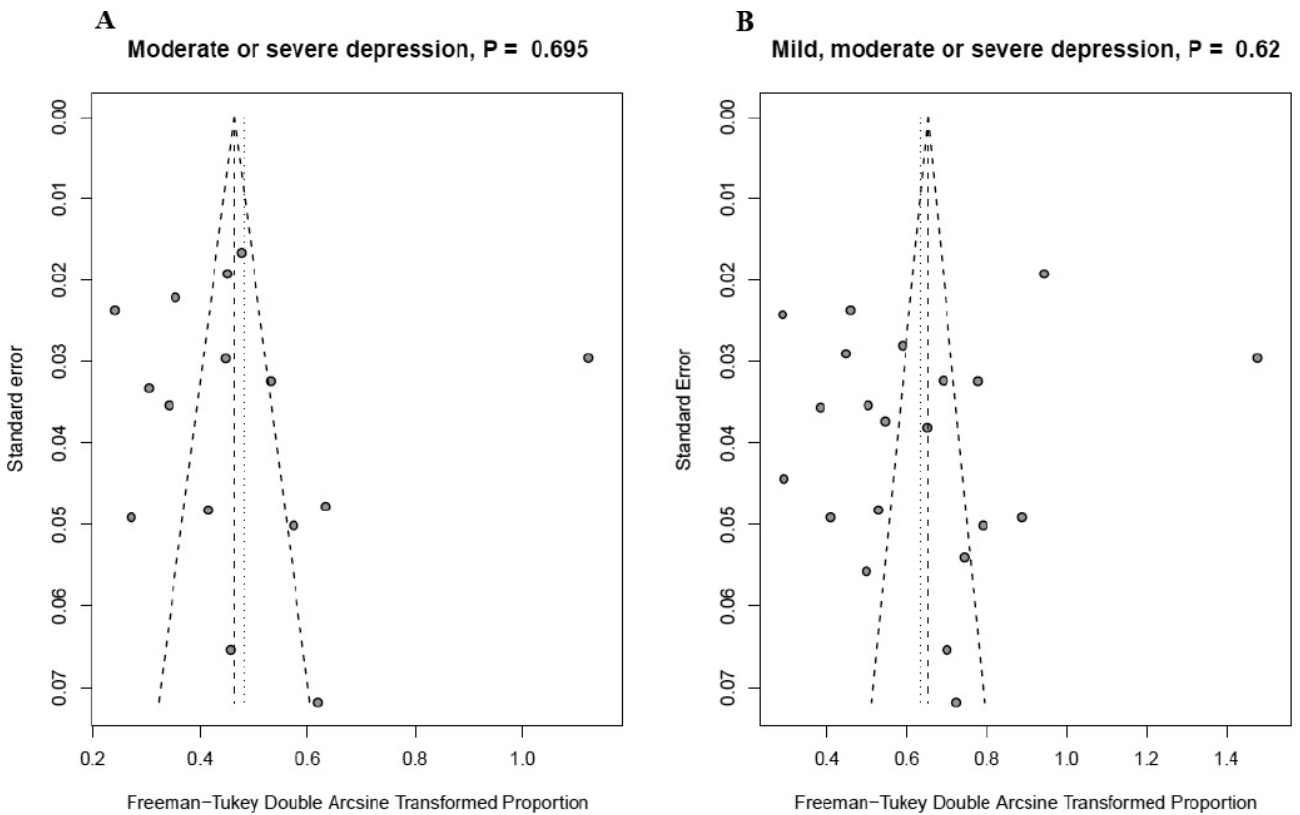
Supplementary Material



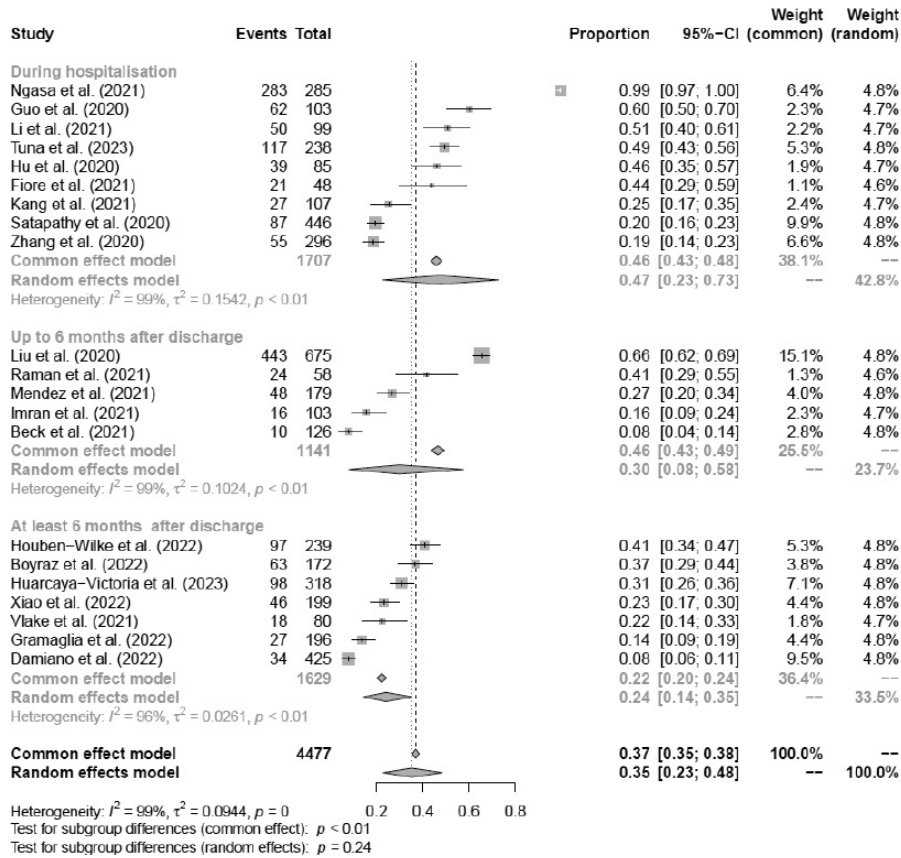
Supplementary Fig. 1. Proportions of moderate or severe depression in individual studies and pooled results by tools used to measure depression



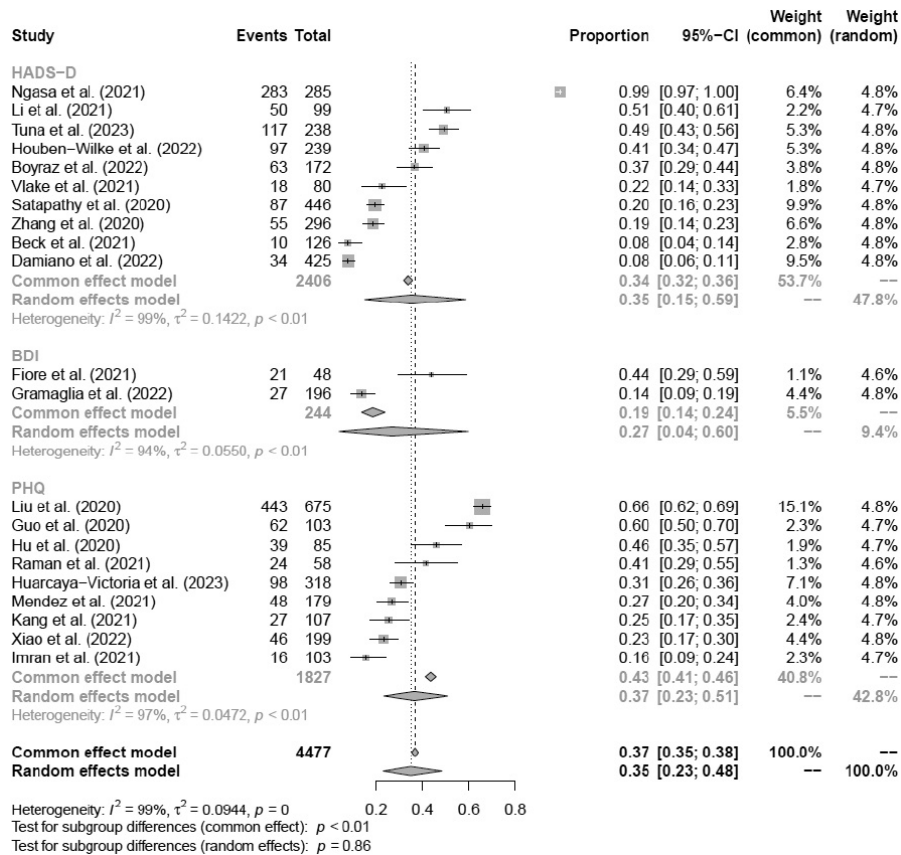
Supplementary Fig. 2. Influential analysis for proportions of moderate or severe depression



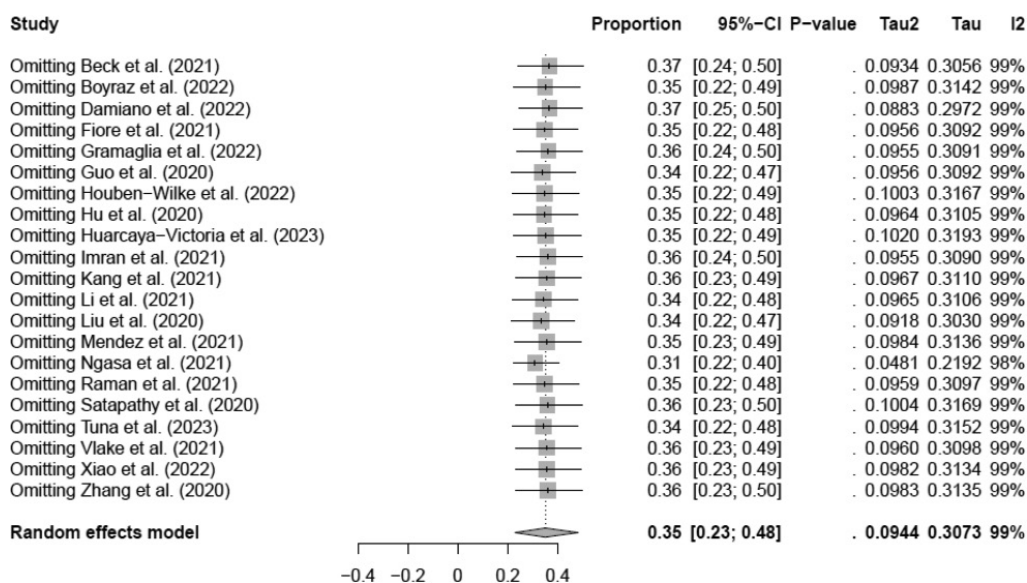
Supplementary Fig. 3. Funnel plots for proportions of **A.** moderate or severe depression and **B.** mild, moderate or severe depression



Supplementary Fig. 4. Proportions of mild, moderate or severe depression in individual studies and pooled results by time after hospitalisation



Supplementary Fig. 5. Proportions of mild, moderate or severe depression in individual studies and pooled results by tools used to measure depression



Supplementary Fig. 6. Influential analysis for proportions of mild, moderate, and severe depression

Section and topic	Item #	Checklist item	Location where item is reported
Title			
Title	1	Identify the report as a systematic review	1
Abstract			
Abstract	2	See the PRISMA 2020 for Abstracts checklist	2
Introduction			
Rationale	3	Describe the rationale for the review in the context of existing knowledge	3–4
Objectives	4	Provide an explicit statement of the objective(s) or question(s) the review addresses	4
Methods			
Eligibility criteria	5	Specify the inclusion and exclusion criteria for the review and how studies were grouped for the syntheses	4
Information sources	6	Specify all databases, registers, websites, organisations, reference lists and other sources searched or consulted to identify studies. Specify the date when each source was last searched or consulted	4
Search strategy	7	Present the full search strategies for all databases, registers and websites, including any filters and limits used	4
Selection process	8	Specify the methods used to decide whether a study met the inclusion criteria of the review, including how many reviewers screened each record and each report retrieved, whether they worked independently, and if applicable, details of automation tools used in the process	4–5
Data collection process	9	Specify the methods used to collect data from reports, including how many reviewers collected data from each report, whether they worked independently, any processes for obtaining or confirming data from study investigators, and if applicable, details of automation tools used in the process	5
Data items	10a	List and define all outcomes for which data were sought. Specify whether all results that were compatible with each outcome domain in each study were sought (e.g. for all measures, time points, analyses), and if not, the methods used to decide which results to collect	5
	10b	List and define all other variables for which data were sought (e.g. participant and intervention characteristics, funding sources). Describe any assumptions made about any missing or unclear information	6
Study risk of bias assessment	11	Specify the methods used to assess risk of bias in the included studies, including details of the tool(s) used, how many reviewers assessed each study and whether they worked independently, and if applicable, details of automation tools used in the process	6; Supplementary Tab. 2
Effect measures	12	Specify for each outcome the effect measure(s) (e.g. risk ratio, mean difference) used in the synthesis or presentation of results	6–7

Supplementary Tab. 1. PRISMA 2020 item checklist

Section and topic	Item #	Checklist item	Location where item is reported
Synthesis methods	13a	Describe the processes used to decide which studies were eligible for each synthesis [e.g. tabulating the study intervention characteristics and comparing against the planned groups for each synthesis (item #5)]	6–7
	13b	Describe any methods required to prepare the data for presentation or synthesis, such as handling of missing summary statistics, or data conversions	6–7
	13c	Describe any methods used to tabulate or visually display results of individual studies and syntheses	6–7
	13d	Describe any methods used to synthesize results and provide a rationale for the choice(s). If meta-analysis was performed, describe the model(s), method(s) to identify the presence and extent of statistical heterogeneity, and software package(s) used	6–7
	13e	Describe any methods used to explore possible causes of heterogeneity among study results (e.g. subgroup analysis, meta-regression)	6–7
	13f	Describe any sensitivity analyses conducted to assess robustness of the synthesised results	6–7
Reporting bias assessment	14	Describe any methods used to assess risk of bias due to missing results in a synthesis (arising from reporting biases)	9
Results			
Study selection	16a	Describe the results of the search and selection process, from the number of records identified in the search to the number of studies included in the review, ideally using a flow diagram	7–8; Fig. 1
	16b	Cite studies that might appear to meet the inclusion criteria, but which were excluded, and explain why they were excluded	7–8
Study characteristics	17	Cite each included study and present its characteristics	8; Tab. 1
Risk of bias in studies	18	Present assessments of risk of bias for each included study	Supplementary Tab. 2
Results of individual studies	19	For all outcomes, present, for each study: (a) summary statistics for each group (where appropriate) and (b) an effect estimate and its precision (e.g. confidence/credible interval), ideally using structured tables or plots.	8–10
Results of syntheses	20a	For each synthesis, briefly summarise the characteristics and risk of bias among contributing studies	9; 11
	20b	Present results of all statistical syntheses conducted. If meta-analysis was done, present for each the summary estimate and its precision (e.g. confidence/credible interval) and measures of statistical heterogeneity. If comparing groups, describe the direction of the effect	8–9; 11; Fig. 1; Fig. 2
	20c	Present results of all investigations of possible causes of heterogeneity among study results	8–9; 11
	20d	Present results of all sensitivity analyses conducted to assess the robustness of the synthesised results	8–9; 11
Reporting biases	21	Present assessments of risk of bias due to missing results (arising from reporting biases) for each synthesis assessed	8–9; 11
Discussion			
Discussion	23a	Provide a general interpretation of the results in the context of other evidence	11–13
	23b	Discuss any limitations of the evidence included in the review	13
	23c	Discuss any limitations of the review processes used	13
	23d	Discuss implications of the results for practice, policy, and future research	13–14
Other information			
Registration and protocol	24a	Provide registration information for the review, including register name and registration number, or state that the review was not registered	4
	24b	Indicate where the review protocol can be accessed, or state that a protocol was not prepared	4
	24c	Describe and explain any amendments to information provided at registration or in the protocol	Not applicable
Support	25	Describe sources of financial or non-financial support for the review, and the role of the funders or sponsors in the review	14
Competing interests	26	Declare any competing interests of review authors	14
Availability of data, code and other materials	27	Report which of the following are publicly available and where they can be found: template data collection forms; data extracted from included studies; data used for all analyses; analytic code; any other materials used in the review	14

From: Page MJ, McKenzie JE, Bossuyt PM et al.: The PRISMA 2020 statement: an updated guideline for reporting systematic reviews. *BMJ* 2021; 372: n71.

Supplementary Tab. 1. PRISMA 2020 item checklist (cont.)

JBI critical appraisal checklist for analytical cross-sectional studies (Moola et al., 2020)														
Author(s)	Q1	Q2	Q3	Q4	Q5	Q6	Q7	Q8				Total	%	Methological quality
Chen et al. (2021)	Y	Y	Y	Y	Y	Y	Y	Y				8/8	100	High
Demiryürek et al. (2022)	Y	Y	Y	Y	N	N	Y	Y				6/8	75	Moderate
Guo et al. (2020)	Y	Y	Y	Y	Y	Y	Y	Y				8/8	100	High
Hu et al. (2020)	Y	Y	Y	Y	Y	Y	Y	Y				8/8	100	High
Huarcaya-Victoria et al. (2023)	Y	Y	Y	Y	Y	Y	Y	Y				8/8	100	High
Kahve et al. (2021)	Y	Y	Y	Y	Y	Y	Y	Y				8/8	100	High
Li et al. (2021)	Y	Y	Y	Y	Y	Y	Y	Y				8/8	100	High
Liu et al. (2020)	Y	Y	Y	Y	Y	Y	Y	Y				8/8	100	High
Mazza et al. (2020)	Y	Y	Y	Y	Y	Y	Y	Y				8/8	100	High
Méndez et al. (2021)	Y	Y	Y	Y	Y	Y	Y	Y				8/8	100	High
Ngasa et al. (2021)	Y	Y	Y	Y	Y	Y	Y	Y				8/8	100	High
Poyraz et al. (2021)	Y	Y	N	Y	Y	Y	Y	Y				7/8	87.5	High
Raman et al. (2021)	Y	Y	Y	Y	Y	Y	Y	Y				8/8	100	High
Satapathy et al. (2020)	Y	Y	Y	Y	Y	Y	Y	Y				8/8	100	High
Sharma et al. (2021)	Y	Y	Y	Y	Y	Y	Y	Y				8/8	100	High
Tuna et al. (2023)	Y	Y	Y	Y	Y	Y	Y	Y				8/8	100	High
Xiao et al. (2022)	Y	Y	Y	Y	Y	Y	Y	Y				8/8	100	High
Zhang et al. (2020)	Y	Y	Y	Y	Y	Y	Y	Y				8/8	100	High
JBI critical appraisal checklist for cohort studies (Moola et al., 2020)														
Author(s)	Q1	Q2	Q3	Q4	Q5	Q6	Q7	Q8	Q9	Q10	Q11	Total	%	Methological quality
Beck et al. (2021)	Y	Y	Y	Y	Y	Y	Y	Y	Y	Y	Y	11/11	100	High
Boyraz et al. (2022)	Y	Y	Y	Y	Y	Y	Y	Y	Y	Y	Y	11/11	100	High
Damiano et al. (2022)	Y	Y	Y	Y	Y	Y	Y	Y	Y	Y	Y	11/11	100	High
Fiore et al. (2021)	Y	Y	Y	Y	Y	Y	Y	N	Y	Y	Y	10/11	90.9	High
Gramaglia et al. (2021)	Y	Y	Y	Y	Y	Y	Y	Y	Y	Y	Y	11/11	100	High
Gramaglia et al. (2022)	Y	Y	Y	Y	Y	Y	Y	Y	Y	Y	Y	11/11	100	High
Houben-Wilke et al. (2022)	Y	Y	Y	Y	N	Y	Y	Y	Y	Y	Y	10/11	90.9	High
Huang et al. (2022)	Y	Y	Y	Y	Y	N	Y	Y	Y	Y	Y	10/11	90.9	High
Imran et al. (2021)	Y	Y	Y	Y	Y	Y	Y	Y	Y	Y	Y	11/11	100	High
Kang et al. (2021)	Y	Y	Y	Y	Y	N	Y	Y	Y	Y	Y	10/11	90.9	High
Mazza et al. (2021)	Y	Y	Y	Y	N	N	Y	Y	Y	Y	Y	9/11	81.9	High
Vlake et al. (2021)	Y	Y	Y	Y	Y	N	Y	Y	Y	Y	Y	10/11	90.9	High

N – no; Y – yes.

Supplementary Tab. 2. Risk of bias assessment using Joanna Briggs Institute critical tools (Aromataris et al., 2020)